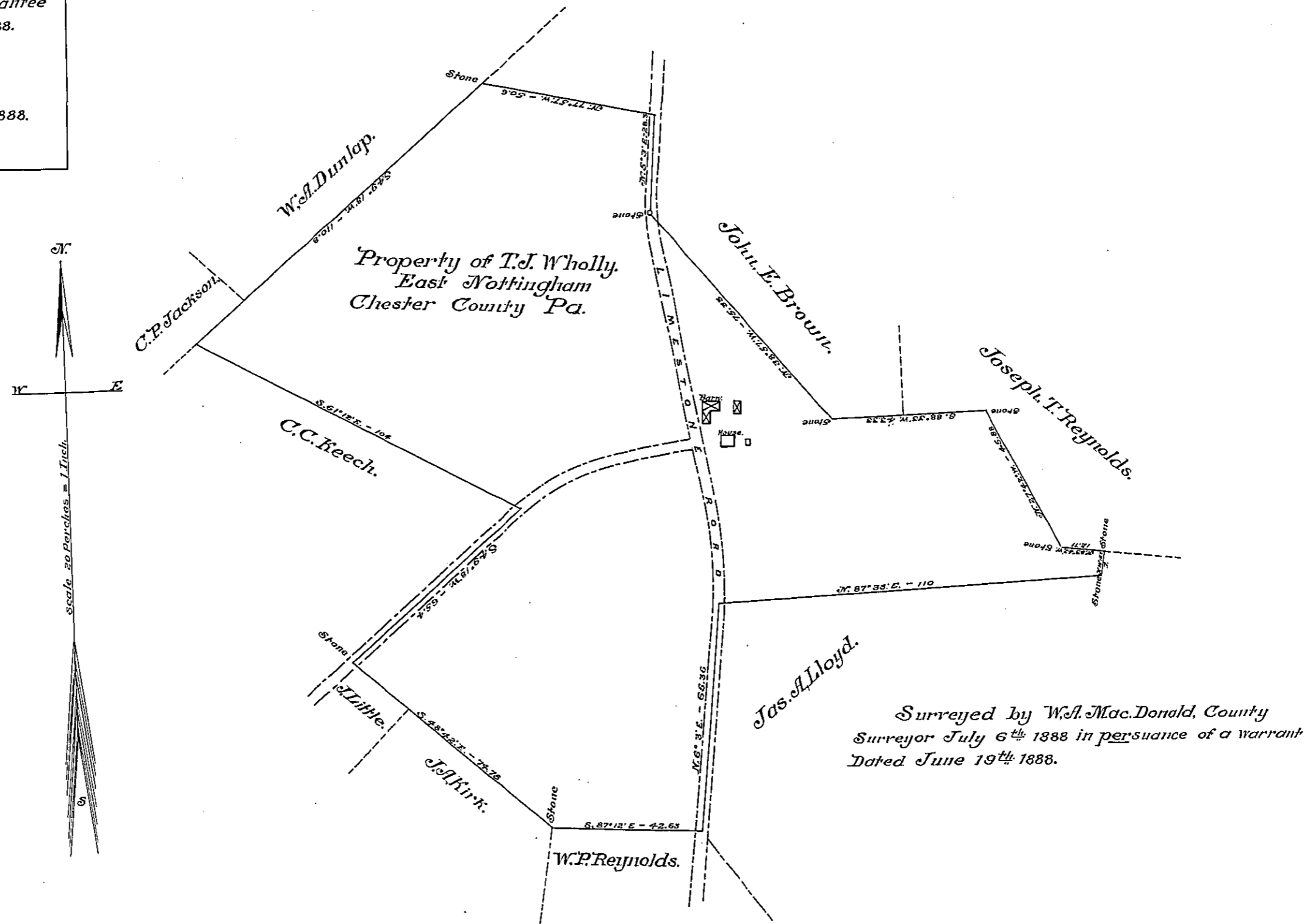


Endorsement on Back
 Chester
 Centre County.
 T.J. Wholly.
 140 ac. 4 ps. & all.

Patented to Warrantee
 August, 21 - 1888.

H. 74. 678.

Accepted, 14 Aug. 1888.
 153.



Surveyed by W.A. Mac Donald, County
 Surveyor July 6th 1888 in pursuance of a warrant
 Dated June 19th 1888.

A Draft of a tract of land situated in the township of East Nottingham and county of Chester containing 140 acres ⁴/₁₀ perches and allowance of six per cent for roads, &c. Surveyed the 6th day of July, 1888. in pursuance of a warrant granted to T.J. Wholly dated the 19th day of June 1888.

To Thos. J. Stewart.
 Secty Int'l affairs

W.A. Mac Donald.
 County Surveyor.

In Testimony, That the above is a copy of the original remaining on file in the Department of Internal Affairs of Pennsylvania, made conformably to an Act of Assembly approved the 16th day of February 1833, I have hereunto set my Hand and caused the Seal of said Department to be affixed at Harrisburg the first day of September 1910.

Henry Houck,
 Secretary of Internal Affairs.